

Height-adjustable work desk  
**USER MANUAL**

**Serie Ei - iDrive**

Stroke 470



# DECLARATION OF CONFORMITY

Manufacturer: ROL Ergo AB  
Flygplatsvägen 1  
555 93 Jönköping  
SWEDEN  
www.rolergo.com

Hereby assure that sit and stand desk, electrical adjustment "EPI - The professional series" Type:

EPI 1-COLUMN 2-STAGE (470)  
EPI 2-COLUMN 2-STAGE (470)  
EPI 2-COLUMN 3-STAGE (650)  
EPI 3-COLUMN 3-STAGE (650)  
EPI BENCH 4-COLUMN 2-STAGE (470)  
EPI BENCH 4-COLUMN 3-STAGE (650)

Are manufactured in conformity with:  
Machine Directive 2006/42/EG, partly completed Machine EMC. Electromagnetic Compatibility Directive 2014/30/EU and in applicable sections, harmonized standard EN527 has been considered. The Low Voltage Directive (LVD) 2014/35/EU.

The accompanying documentation is kept in the Development department of ROL Ergo, represented by Fredrik Ekvall.

Jönköping, 2017-04-06



Robert Lindström  
Head of Research and Development

## SAFETY FIRST

Your safety and the safety of others is very important. Please familiarize yourself with all instructions and safety warnings before operating the desk. Please keep this manual for future reference.

String Furniture AB and/or ROL Ergo AB is not liable for damage to people, animals or objects caused by improper or unauthorised use. This also applies for damage caused through disregard or insufficient consideration of the safety criteria contained in this user manual, or through alteration of the product or use of unsuitable spare parts.

To help you make informed decisions about safety, we have provided operating procedures and other information on labels and in this user manual. This information alerts you to potential hazards that could hurt you or others. To avoid these situations further please use your own good judgment. You will find important safety information in a variety of forms. Safety messages are preceded by a safety alert symbol and one of three signal words: **DANGER**, **WARNING** or **CAUTION**. These safety messages are listed in order of severity, identify the general risks and actions to avoid these risks. The signal words used in this manual are listed below:



### **DANGER**

Indicates an imminent hazardous with a high risk of serious injury or death.



### **WARNING**

Indicates a potentially hazardous situation that if not avoided may result in serious injury or death.



### **CAUTION**

Indicates a potential hazardous situation which may result in minor or moderate injury. It may also be used to alert against unsafe practices.



### **NOTICE**

Indicates an alert to call attention to proper instructions or operation procedures to assure correct equipment function and to avoid equipment damage or wear.

Note that the information and specifications included in this manual may have changed since the time of approval for printing. No revision service is applied. Find current user manuals at [www.rolergo.com/support/](http://www.rolergo.com/support/)

# CONTENTS

<b>1.</b>	<b>GENERAL INFORMATION .....</b>	<b>5</b>
1.1	Designated use.....	5
1.2	Product specifications.....	5
1.3	User Information.....	6
1.4	Before You Start .....	6
<b>2.</b>	<b>SAFETY INSTRUCTIONS .....</b>	<b>7</b>
<b>3.</b>	<b>ASSEMBLY &amp; ADJUSTMENT .....</b>	<b>9</b>
3.1	Assembly Instruction.....	9
3.2	System Procedure.....	9
<b>4.</b>	<b>OPERATION INSTRUCTIONS.....</b>	<b>11</b>
4.1	Basic Functions.....	11
4.2	Manual Reset.....	13
<b>5.</b>	<b>MAINTENANCE &amp; REPAIRS .....</b>	<b>14</b>
5.1	Cleaning, Inspection & Storage.....	14
5.2	User Maintenance.....	14
5.3	Repairs.....	14
5.4	Servicing of Double-Insulated Products .....	15
<b>6.</b>	<b>APPENDIX .....</b>	<b>16</b>
6.1	Dimensions leg system: Series Ei - iDrive with 470 stroke .....	16
6.2	Troubleshooting.....	17
6.3	Performing a reset .....	20

# 1. GENERAL INFORMATION

## 1.1 Designated Use

This stand is intended for use for electrical height adjustment of a sit-stand workstation commercially or in home environments. Any other uses are viewed as improper. The stand shall only be operated indoors in dry, enclosed environments. For maximum intended load and additional specifications see 1.2 Product Specifications.

## 1.2 Product Specifications

	<b>EPI Ei stand 470</b>
<b>Maximum load*</b>	120 kg
<b>Stroke</b>	470 mm
<b>Speed**</b>	<40 mm/s
<b>Noise</b>	43 dB
<b><i>Electrical rating</i></b>	
<b>Input</b>	100-240VAC 50-60Hz, 3,2A
<b>Output</b>	35V
<b>Duty cycle</b>	1:9

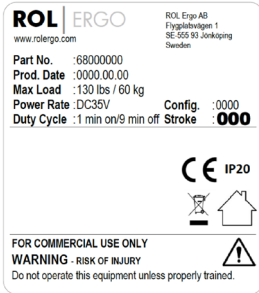
\*Load shall be evenly distributed

\*\*Speed may vary with load

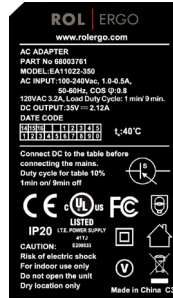
## 1.3 User Information

When customer support is required the operator may ask for information stated on the product label. The product label is located on the house of the motor on top of each column.

Example of product label



Example of power supply label



## 1.4 Before You Start

Check for and remove obstacles in path of the desk top. Before first use, the control unit must register the lowest point of elevation. Do reset as section 4.2. Under normal conditions the system communicates internally and knows the position of each column. If there are differences in column height, please do a manual reset as listed in section 4.2.

## 2. SAFETY INSTRUCTIONS



### DANGER

- Improper usage, abuse, or misuse of the power supply, handset, motors and other electrical components may result in an electrical shock injury or possible death.
- Do not open the power supply unit or handset under any circumstances. The power supply and handset contain no serviceable parts.
- Do not modify or make any changes to the power supply, handset or other electrical devices.
- During installation, repair, cleaning, or maintenance work, the power cable must be disconnected from the outlet.
- Connect this desk to a proper outlet only.
- The power supply unit may only be operated with voltage as specified on the power supply label.
- Only use the power cord supplied with the power supply (Flexible cord 2-pol SJT-2 2x18AWG 105°C 300V VW-1 CSA). Make sure that the cord is not damaged before usage. Do not operate the power supply unit if the power cord is damaged. A damaged cord shall only be changed by authorised personnel.
- Do not expose the power supply, handset or other electrical device to water or other liquids including moisture, drips, splashes or spills.
- Do not operate the power supply, handset or other electrical device in a potentially explosive atmosphere. Do not operate where aerosol spray products are being used or where oxygen is being administered.
- Do not use the product if it has been dropped or damaged. Contact the manufacturer for examination or repair.
- The desk must not be structurally or technically altered or modified in any way.



### WARNING

- This desk is not intended for use by children or individuals with limited physical, sensory or mental abilities or with a lack of experience and/or lack of expertise, which may affect the ability to safely operate equipment, unless they are supervised by a person responsible for their safety.
- Use this desk only for its intended use as described in these instructions. Do not use attachments not recommended by the manufacturer.
- Keep the cords away from heated surfaces.

- Never operate the desk with any openings blocked.
- Never drop or insert any object into any opening.
- Do not use outdoors.
- To disconnect, turn all controls to the off position, then remove plug from outlet.
- Do not exceed the maximum intended load.
- To minimize the risk of squeezing or pinching ensure that there is at least 2,5 cm (one inch) safety margin between the desk top and items above or below the desk top. As a safety margin for body or head use a minimum of 40 cm (16 inch) between static objects and moving surfaces.
- During the lowering or rising of the desktop, the operator must ensure that no person or object risk being harmed by the operation.
- The desk must only be operated while in an upright position.
- Keep children away from moving parts and underneath the desk.
- Children must be supervised at all times.
- The desk may not be used to lift people. Do not sit or stand on a desk while it is raised or lowered.



## CAUTION

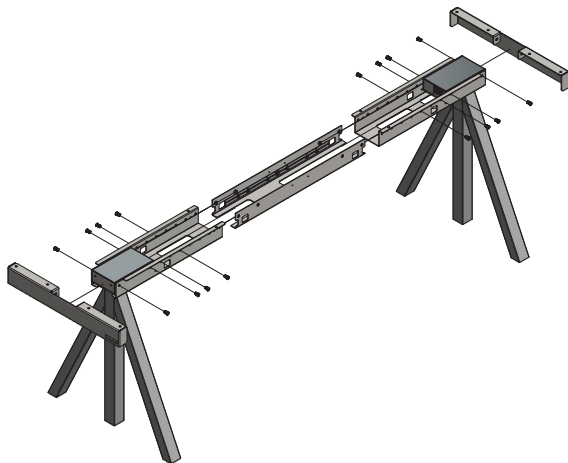
- The motors control unit is not designed for continuous operation. Changing the desktop position without interruption must not exceed the intended duty cycle, see 1.2 Product Specifications. The unit is thermally protected and will temporarily shut down if use exceeds the duty cycle.



## 3. ASSEMBLY & ADJUSTMENT

### 3.1 Assembly Instruction

The official assembly instruction can be found with the base components. Make sure to ask your desk vendor for an approved combination of desktop and frame.



#### NOTICE

Make sure that the desk is leveled, using the adjusters, and placed on flat ground before usage.

### 3.2 System Procedure

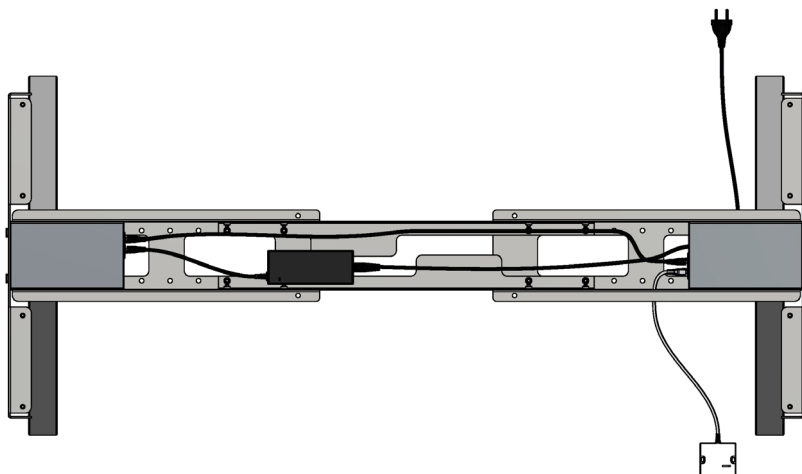


#### WARNING

The main power cord must be unplugged during the setup.

To set up the desk:

1. Connect the handset to a 3-pin motor/motor house or to bus cable socket.
2. Connect the bus cable between each motor/motor house.
3. Connect the power supply to the motor/motor house.
4. Assemble the power cord to the power supply.
5. The desk is ready for use, connect the power cord to the outlet.



## DANGER

Improper power connection of the equipment can result in a risk of electric shock. Check with a qualified electrician for any concerns.



## CAUTION

When the power cord is plugged in, the electrical control devices are operational.



## NOTICE

When disconnecting components such as the power supply, bus cable or the handset, the strain relieve hook must be pressed before removing the connector. When inserting the connector, an audible “click” indicates that the strain relieve hook has correctly re-engaged.

In case of a power failure or if the power cord is unplugged during the movement of the drives, a manual reset may be necessary. See section 4.2.

The control unit can be damaged by power surges. Unplug the power cord during a thunderstorm or if you do not intend to use the desk for a longer period.

## 4. OPERATION INSTRUCTIONS

### 4.1 Basic Functions

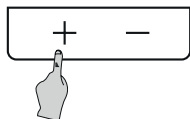


#### NOTICE

Read the user manual carefully before installing or operating the control unit. If chosen handset is not covered this user manual, please see separate user manual supplied with the hand set.

#### 4.1.1 Upward Desktop Movement

This function enables the upward adjustment of the work surface. To change its position, proceed as follows:



Press the handset up button and continue to hold until desired desktop height is reached.

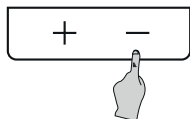


#### NOTICE

The desktop will continue moving upwards until you release the button or the maximum height is reached.

#### 4.1.2 Downward Desktop Movement

This function enables the downward adjustment of the work surface. To change its position, proceed as follows:



Press the handset down button and continue to hold until desired desktop height is reached.



#### NOTICE

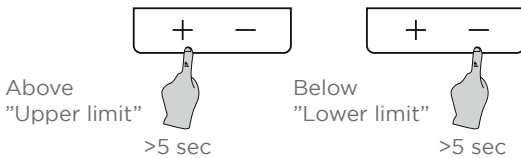
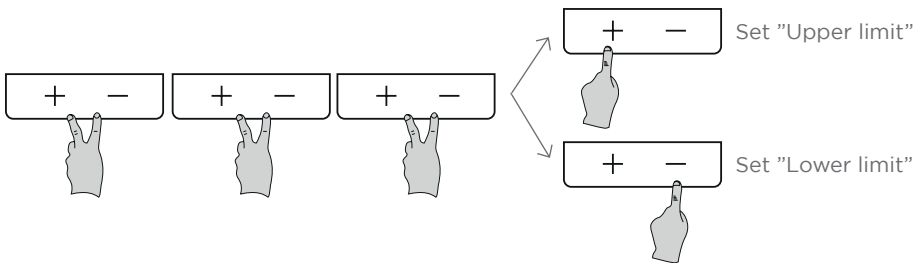
The desktop will continue moving downwards until you release the button or the minimum height is reached.

### 4.1.3 Limits

If the software version in the handset is 4.20 or later it has an editable memory for high and low (stand and sit) position. It could also be used to avoid collision with i.e. a cabinet or pedestal. When a memory position is set the desk will stop when the memory position is reached. To drive the desk outside the memory position press the up or down button for a minimum of 5 seconds.

How to set memory/end positions:

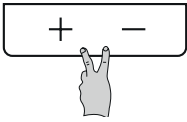
1. Drive your desk to the level you want to store.
2. Press both buttons 3 times (0,5-1 second between each pressing).
3. Then press + or - to set the position (0,5-1 second).
4. Do the same procedure for your second store.



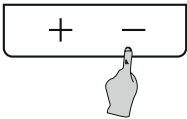
## 4.2 Manual Reset

If a motor or other electronic has been disconnected from the column, during or after the assembly, a reset (homing) cycle **MUST** be performed. A reset cycle should be made with an evenly distributed weight of approx. 45 kg (100 lbs) applied on the desk.

Perform a reset by:



Simultaneously pressing the up and down buttons for minimum of 8 seconds.



Press and hold the down button and the desk will slowly move the lowest point possible.



The desk/stand is ready for normal use.

## 5. MAINTENANCE & REPAIRS

### 5.1 Cleaning, Inspection & Storage

Clean the desk stand by wiping it down with a dry microfiber cloth. Never use solvent, abrasive or corrosive compounds.

Products must be cleaned at regular intervals to remove dust and dirt and inspected for mechanical damage and normal wear and tear. Worn-out parts must be replaced. Unplug the power cord if you do not intend to use the desk for a longer period.

Do not store desk or cables in direct sunlight.

### 5.2 User Maintenance

Products are closed units and require no internal maintenance. Columns must be inspected at attachment points, wires, cabinet, and plugs, check that columns function correctly.

- Inspect columns for loose connections and damaged plugs/wires.
- Inspect power supply for loose connections and damaged plugs/wires.
- The power supply and the handset is sealed and maintenance free.

### 5.3 Repairs

Check all screws and bolts after the first week of use and tighten screws and bolts where necessary to ensure safe operation of the desk. If the desk cannot be raised or lowered, check the cable connection between:

- The power supply and the motor/motor house (column system).
- The handset and the motor/motor house.
- The columns/motors.

If the desk still does not operate, the control system may have triggered the overheating or duty cycle protection. Please wait for at least 9 minutes and try again before proceeding.

If a control unit is replaced, a manual reset is required. Follow the steps as shown in section 4.2.


See Appendix for troubleshooting. If the desk is still not operational, please contact your vendor for further assistance.

The control system is equipped with safety features; the intermittency function, the overheating protection and memory function:

- Duty cycle function – The duty cycle factor of the desk 1:9 meaning 1 minute of operation must be followed by 9 minutes of inactivity. If this limitation is exceeded, the desk will become inoperable until the control box resets automatically.
- Overheating protection – The desk will become inoperable if the overheating protection is triggered and will return to operation automatically once the heat has dissipated sufficiently.
- Memory function – The control system (each column) will retain information regarding the elevation of the desk at all times. This information will remain stored even in case of power failure or if the power cable is disconnected from the power outlet.

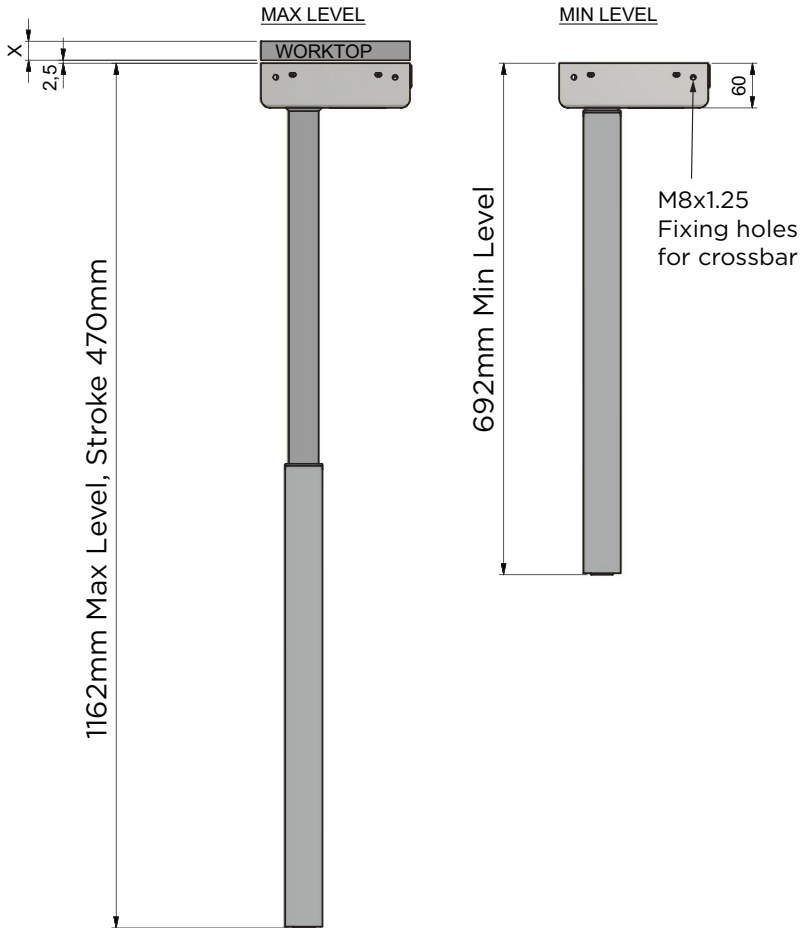
## 5.4 Servicing of Double-Insulated Products

This product is double insulated and provided with a non-polarized plug and 2-conductor cord. The plug must be plugged into an appropriate building outlet that is properly installed in accordance with all local codes and ordinances. No grounding means is provided on a double-insulated product, nor is a means for grounding to be added to the product.

Servicing a double-insulated product requires extreme care and knowledge of the system, and is to be done only by qualified service personnel. Replacement parts for a double-insulated product must be identical to the parts they replace. A double insulated product is marked with a symbol .

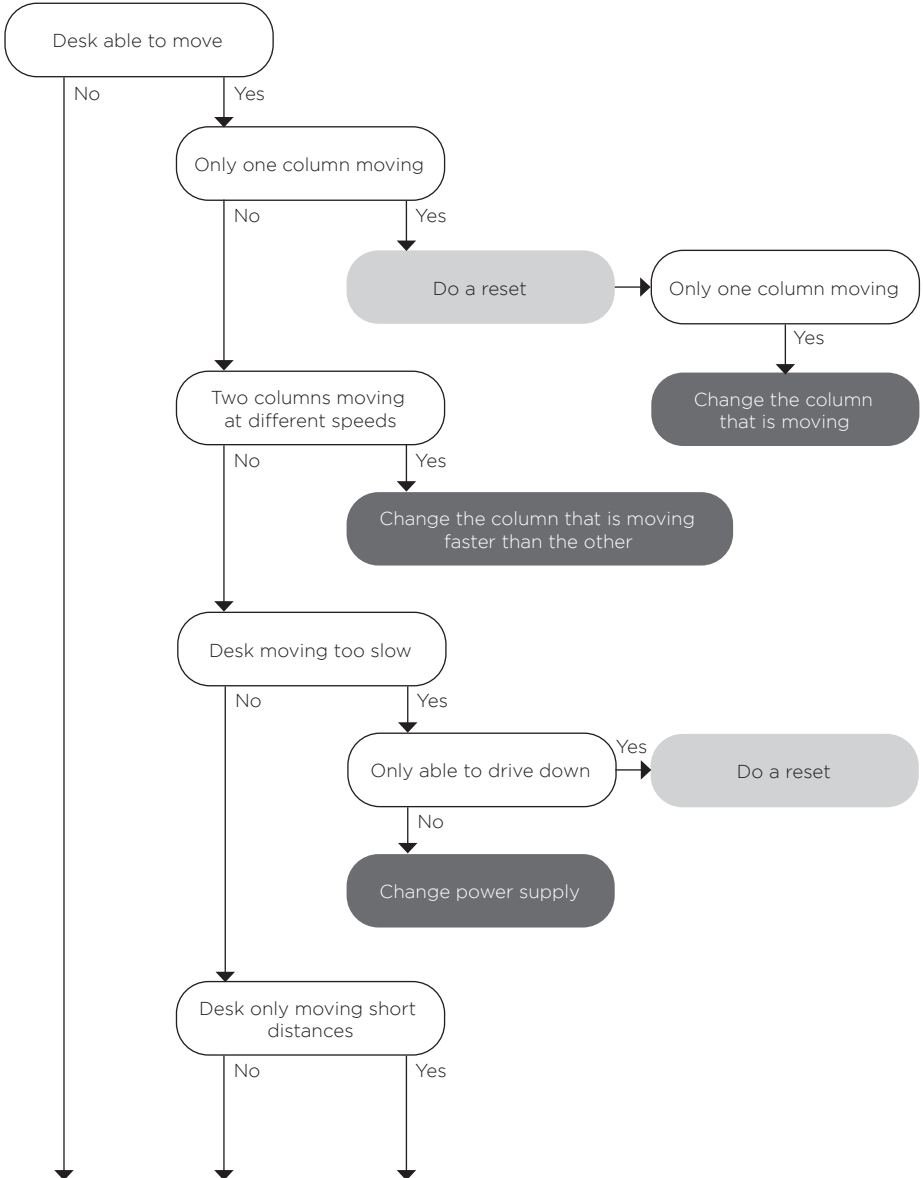
## 6. APPENDIX

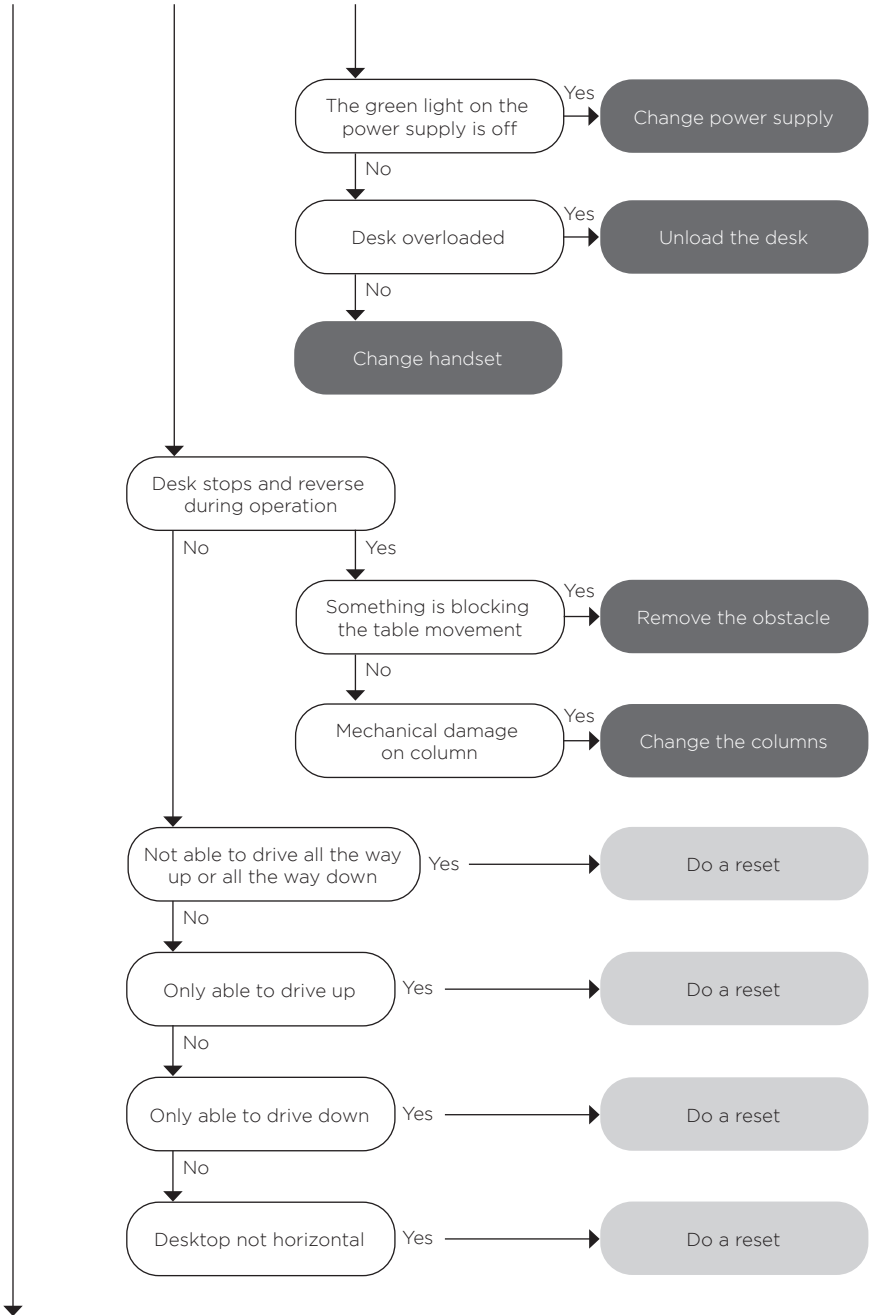
### 6.1 Dimensions leg system: Series Ei - iDrive with 470 stroke

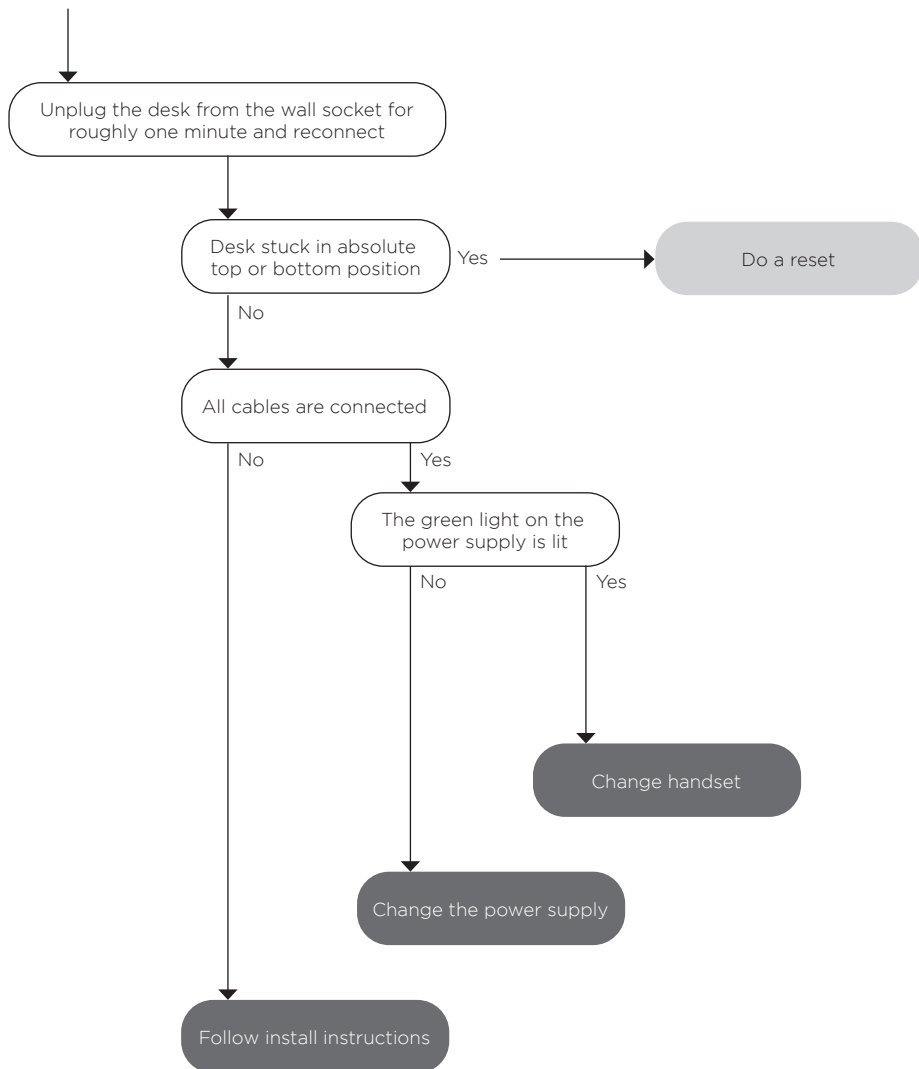




## 6.2 Troubleshooting







### 6.3 Performing a reset

